

# HPE GreenLake for File Storage

Enterprise-grade, scale-out file storage to supercharge data-intensive applications



## Key features

### 1. Accelerate with enterprise

**performance at scale:** All-NVMe speed for fast, predictable performance that spans the scale of your data; no front-end caching or data movement between media; multiprotocol NFS and SMB access to the same data; store all data for data-intensive workloads

### 2. Simplify with an intuitive cloud

**experience:** Streamlined deployment with HPE GreenLake edge-to-cloud platform; easy file share creation; unified storage management with a single cloud console; automated, nondisruptive, policy-driven upgrades

### 3. Enhance productivity with

**faster time to insight:** More value unlocked from all your data in aggregate; increased productivity of data scientists and line of business application owners; simple setup and fast job completion; enhanced collaboration with single global namespace; rich data services; superior flash efficiency and data reduction

## Data is the life force of the modern enterprise

In today's enterprise, data powers the insights, innovation, and competitive advantage that move your business forward, faster. It's now central to every organization's success.

But given the exponential growth of file data, enterprises face a huge challenge in managing, processing, and extracting value from that data. And as data growth continues to accelerate, IT organizations have difficulty scaling their data infrastructures—to keep up and achieve data-first modernization across the hybrid cloud.

To accelerate data-first modernization, enterprises need to resolve the IT problems slowing them down: complex management, storage infrastructure silos, poor performance scaling, and low productivity across edge to cloud.

For file-based and data-intensive applications, IT leaders need a different approach to storage—one that delivers a cloud experience everywhere, runs all workloads on a single infrastructure, maximizes performance at scale, and expedites setup and job completion.



## **A different approach to file storage**

HPE GreenLake for File Storage offers enterprise performance at scale to accelerate the most data-intensive applications, radically simple file data management for an intuitive cloud experience, and enhanced productivity with faster time to insight.

HPE GreenLake for File Storage is built on VAST Data software and the HPE Alletra Storage MP modular hardware platform. This combination provides a highly differentiated file storage offering. By avoiding tradeoffs, the solution makes storage simple while delivering scalable performance via a unique modular, flexible hardware architecture that helps eliminate hardware silos and islands of data.

## **Accelerate with enterprise performance at scale**

HPE GreenLake for File Storage accelerates your most data-intensive applications with enterprise performance at scale for all your data. And it's not just performance that reaches a high peak at some point in time for a small data set. Rather, it's fast, sustained performance that spans the entire scale of your data and supported workloads that process high volumes of data. These workloads include artificial intelligence (AI), machine learning (ML), Big Data, deep learning (DL), high-performance computing (HPC), life sciences, financial analytics, media and entertainment, large data lakes, and high-speed access to data archives.

HPE GreenLake for File Storage has a disaggregated, shared-everything, highly resilient modular architecture that allows you to scale performance and capacity independently—and it's designed for exabyte scale. With all-NVMe speed for fast, predictable performance and no front-end caching or data movement between media, you can supercharge your most data-intensive applications with read performance that is significantly faster than legacy NAS. In addition, you get six-9s availability<sup>1</sup> with no rebuild times for controller failures. And you get the flexibility of multiprotocol NFS and SMB access to the same data.

## **Simplify with an intuitive cloud experience**

HPE GreenLake for File Storage provides an intuitive cloud experience with radically simple file data management that reduces operational and management overhead for your IT staff. Powered by the HPE GreenLake platform, you get streamlined deployment, easy file share creation, unified storage management with a single cloud console, and automated, nondisruptive upgrades.

In addition, you can modernize your data management with a comprehensive suite of cloud data services and a unified operating experience on the HPE GreenLake platform.

This simple, self-service cloud experience—accessible from anywhere, on any device—empowers your IT staff to work on strategic initiatives rather than be weighed down by day-to-day operations.

<sup>1</sup> [HPE Storage Substantiation](#)

## Enhance productivity with faster time to insight

HPE GreenLake for File Storage helps you to unlock more value from all your aggregated data. Simple setup and fast job completion increase the productivity of your data scientists and line-of-business application owners. They can get results faster as they're not burdened by cumbersome, legacy file systems that require technical expertise and intricate setup processes just to run. Highly compensated subject-matter experts no longer need to expend valuable time and effort performing IT tasks but can instead focus on their actual work.

With its single global namespace, HPE GreenLake for File Storage enhances collaboration for faster time to insight, discovery, and innovation. That gives you a competitive advantage.

In addition, HPE GreenLake for File Storage provides rich data services, including no-overhead snapshots and native replication, as well as superior flash efficiency with the similarity algorithm, which, unlike compression and deduplication, reduces data with both a global and fine-grained approach. For example, savings are 2:1 reduction for life sciences data; 3:1 for pre-reduced backups, pre-compressed log files, and HPC and animation data; and 8:1 for uncompressed time-series data.<sup>2</sup>

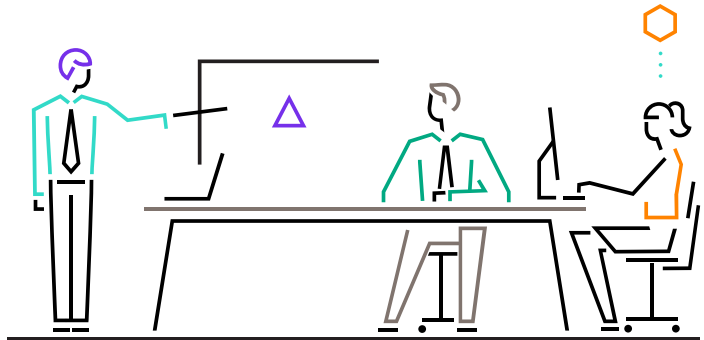
Finally, the solution's superior file data infrastructure is designed to deliver high ROI on your capital equipment investments by helping eliminate any performance imbalance between compute and storage resources.

Imagine supercharging your data-intensive workloads with enterprise performance at scale, simplifying your file data management with an intuitive cloud experience, and enhancing your competitive advantage with faster time to insight. HPE GreenLake for File Storage makes it possible.

Are you ready to unlock the value of your data?

### Example workloads

- AI, ML, Big Data, and DL
- HPC
- Life sciences
- Financial analytics
- Media and entertainment
- Large data lakes
- High-speed access to data archives

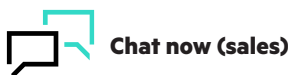


<sup>2</sup> HPE Storage Substantiation

### Learn more at

[hpe.com/data/hpe-greenlake-file-storage](https://hpe.com/data/hpe-greenlake-file-storage)

**Make the right purchase decision.**  
Contact our presales specialists.



**Chat now (sales)**



**Call now**



**Get updates**

Explore **HPE GreenLake**

**Hewlett Packard  
Enterprise**

© Copyright 2023 Hewlett Packard Enterprise Development LP. The information contained herein is subject to change without notice. The only warranties for Hewlett Packard Enterprise products and services are set forth in the express warranty statements accompanying such products and services. Nothing herein should be construed as constituting an additional warranty. Hewlett Packard Enterprise shall not be liable for technical or editorial errors or omissions contained herein.

a50007879ENW