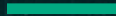
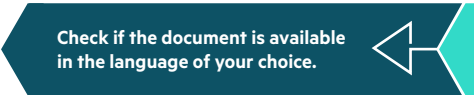


TAKE YOUR TAPE LIBRARY TO ANOTHER DIMENSION WITH HPE COMMAND VIEW FOR TAPE LIBRARIES





Automated tape libraries provide the most secure, cost-effective solution for managing data at scale, to support agile tiered storage architectures, fuel big data analytics and provide a vital last line of defense against ransomware and other threats to business continuity.

With more geographically dispersed data centers in the picture, and more IT departments working remotely, it can be hard to keep your finger on the pulse of what’s happening with your data, let alone optimize drive and media performance across the inventory.

What’s needed is a simple tool that makes it easy for IT admins to proactively and predictively manage the health of your entire tape library ecosystem, and to help you answer the following questions:

- How well did data transfer for back-ups and data archives perform. Could it be better?
- Are we efficiently utilizing all the libraries and drives equally, or are we overloading some, when others aren’t being used?
- Are drives and media in good condition?
- Is my archived data still in good shape?
- When is a good time to upgrade hardware or carry out maintenance?

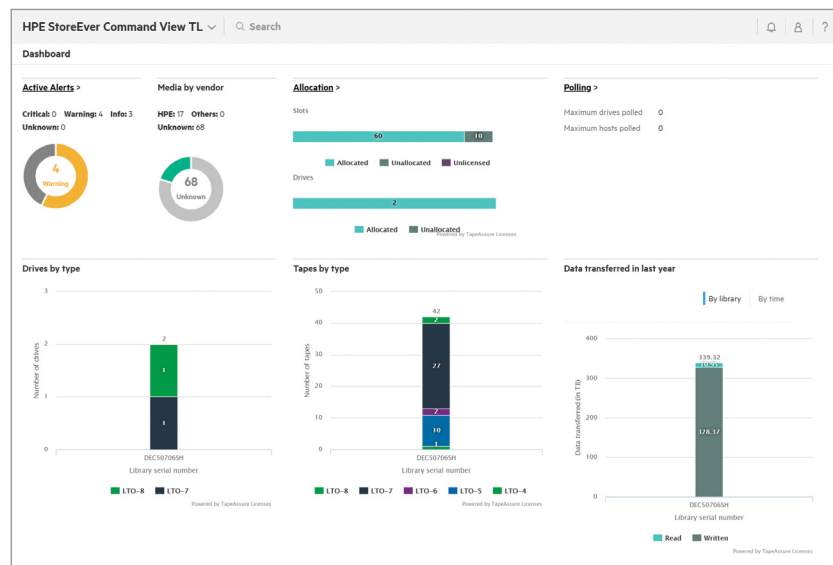


BENEFITS OF CVTL

- Boost ROI by optimizing current tape hardware utilization and accurately plan for future investments
- Increase productivity with automated, centralized management and easy to use reporting
- Quickly set up and configure your fibre channel (FC) or serial attached SCSI (SAS) libraries with smart graphics and configuration wizards
- Drive extra functionality with licensed features: HPE StoreEver CVTL TapeAssure Advanced and HPE StoreEver CVTL Data Verification

HPE COMMAND VIEW FOR TAPE LIBRARIES (CVTL) IS THE PERFECT TOOL TO TRACK, MANAGE AND OPTIMIZE THE HEALTH, PERFORMANCE AND UTILIZATION OF YOUR TAPE LIBRARY ECOSYSTEM, FROM A SINGLE, BROWSER INTERFACE.

Now, you can simply and quickly manage every HPE StoreEver Tape Library in your environment—from a single, web-based pane of glass—wherever you are in the world. Monitor backup logs, check drive status, receive alert notifications and diagnose problems, from your centralized dashboard. Everything’s right there in front of you. There’s no need to perpetually log in and out of individual libraries to carry out the most basic of management tasks.



DIG DEEPER WITH CVTL TAPEASSURE ADVANCED

TapeAssure Advanced is an enhancement of the core HPE StoreEver CVTL software application.

It can deliver 24x7 monitoring and analytics to reduce unscheduled backup downtime, mitigate the risks of hardware failure and increase ROI through higher asset utilization.

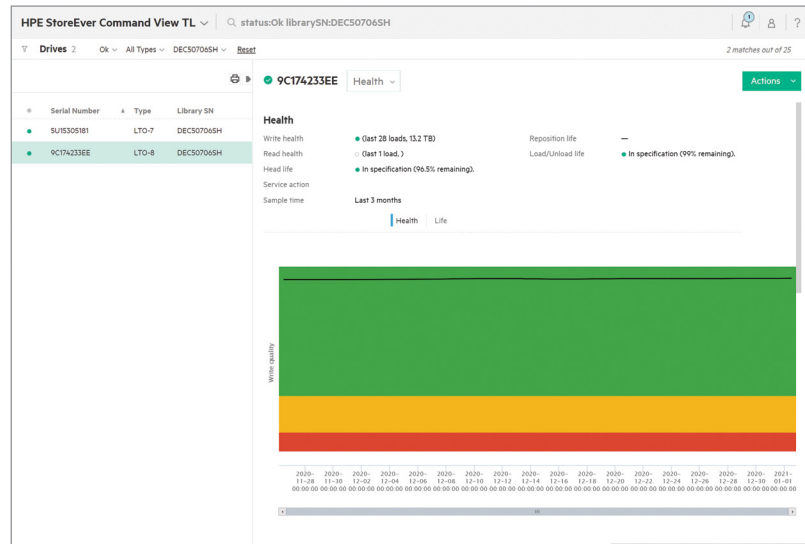
You can check the health of any given drive during recent backup operations. Data transfer rates are checked to make sure tapes are performing at the specified maximum for the media. If not, this could cause bottlenecks and slow overall library performance. The moment you spot a problem, you can drill down and examine the health history of individual tapes used on the drive, determine whether the fault is with the drive or a particular tape, and follow up with immediate, corrective action.

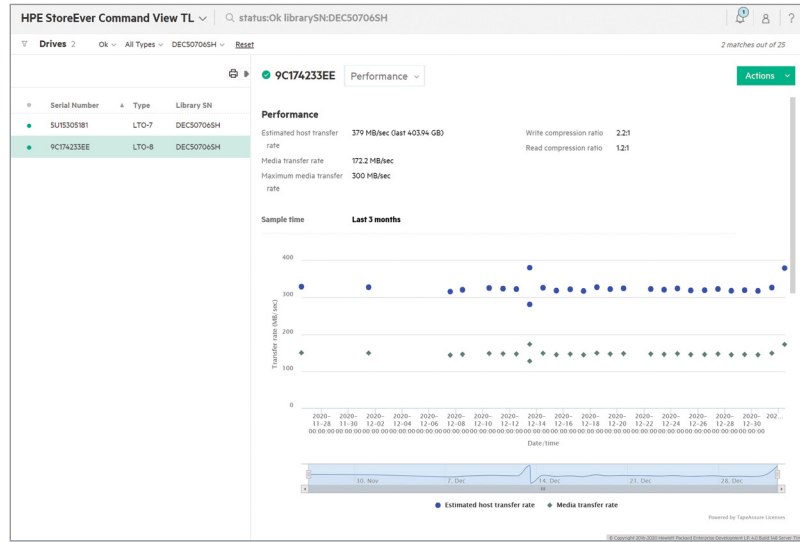
Here is an overview of a drive that has been put under the CVTL microscope with the TapeAssure Advanced feature. Drives and tapes are categorized as good (green), fair (amber) or poor (red). Drives that are categorized in the red zone will require urgent action, and data on any tape in the red zone will need to be migrated to maintain its integrity.

The TapeAssure Advanced feature of CVTL continuously monitors the state of the libraries, leaving IT admins free to carry out other management tasks. On-screen and email notifications warn the user of any hardware events needing attention before performance degrades, including suggested actions to take. Users can also have weekly reports sent to their inbox giving the assurance that everything is working as it should, and without having to log in to keep checking.



- Identify and prevent potential drive and media failures before they happen
- Pinpoint and alleviate performance bottlenecks and load balancing issues
- Plan future investments based on actual drive and media utilization





GET REAL PEACE OF MIND WITH CVTL DATA VERIFICATION

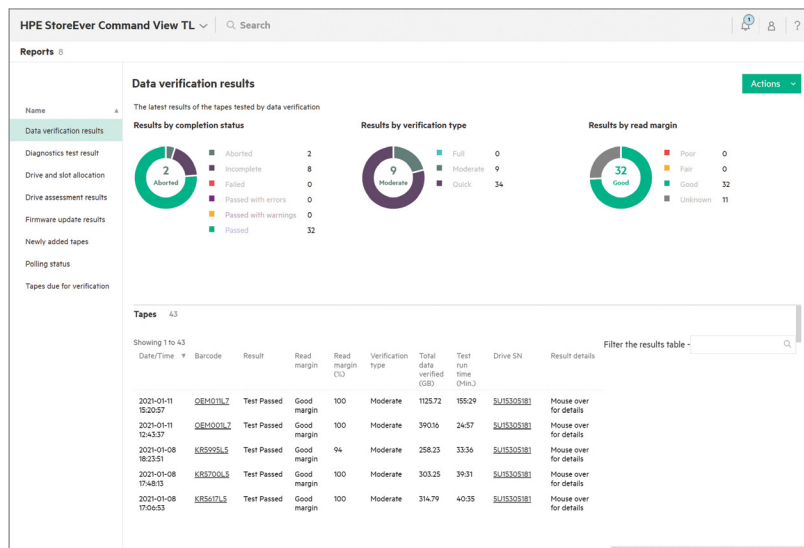
CVTL Data Verification is a further enhancement of the core CVTL application.

The software enables you to carry out regular checks to ensure that your business-critical data can be read for recovery, compliance, or monetization. This gives you the peace of mind that you can always restore critical business data and carry out data migration only when necessary.

The Data Verification component of CVTL will periodically scan archived tapes to test media readability and data integrity. By identifying potential media errors before a failure occurs, you can actively migrate data to a known quality media before any problems arise. Data verification is automated and policy-based and runs in the background without interrupting live applications. The user gets an advance warning of any events needing attention before performance degrades, including suggested actions to take.



- Scan infrequently accessed LTO tapes to verify the health of tape cartridges as well as the data itself
- Improve reliability and minimize the risk of restore failure
- Scan everything in the background, without interrupting live applications
- Get alerts for when data needs to be migrated to new



CVTL and its licensed features can also be fully integrated with HPE Insight Remote Support (IRS). This tool captures and analyzes routine monitoring data, carries out intelligent event diagnosis and triggers alerts for fast, accurate resolution by HPE before the user is even aware there is an issue.





Now you can make sure all your libraries, drives and tapes are operating at their peak and that all data is ready to be launched back into the live environment whenever needed. Every library, drive and tape is constantly under the microscope, giving a deep and clear insight into the health, performance and cost-effectiveness of your entire tape library assets, regardless of their location.

The core HPE StoreEver Command View for Tape Libraries component is completely free, and the TapeAssure Advanced feature is available to trial for 60 days. The Data Verification feature can also be used for free on 10 tapes so you can try before you buy.

LEARN MORE AT

hpe.com/storage/cvtl

Make the right purchase decision.
Contact our presales specialists.



Chat



Email



Call



Get updates